

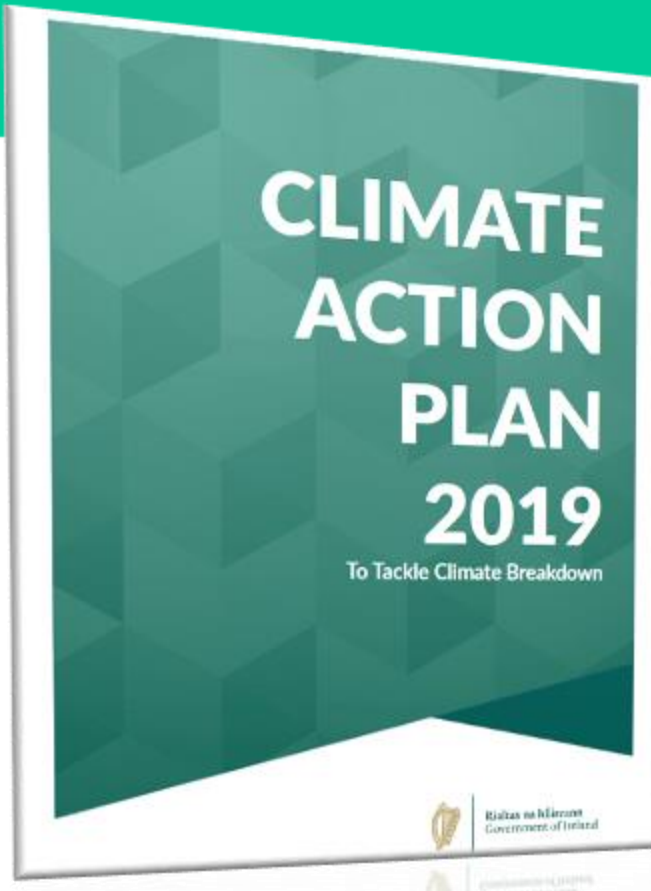
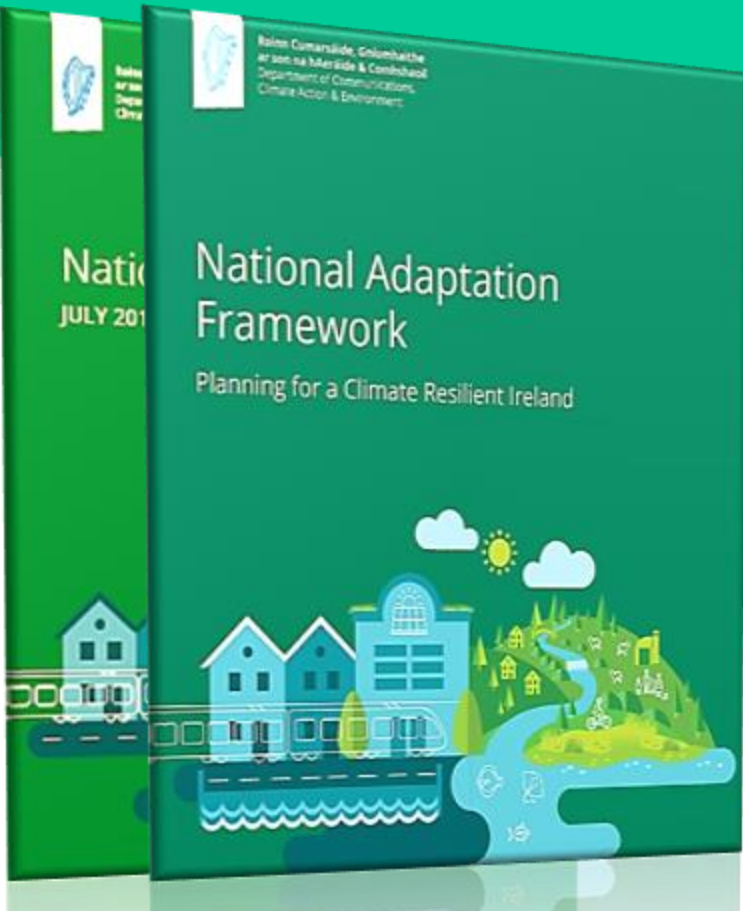
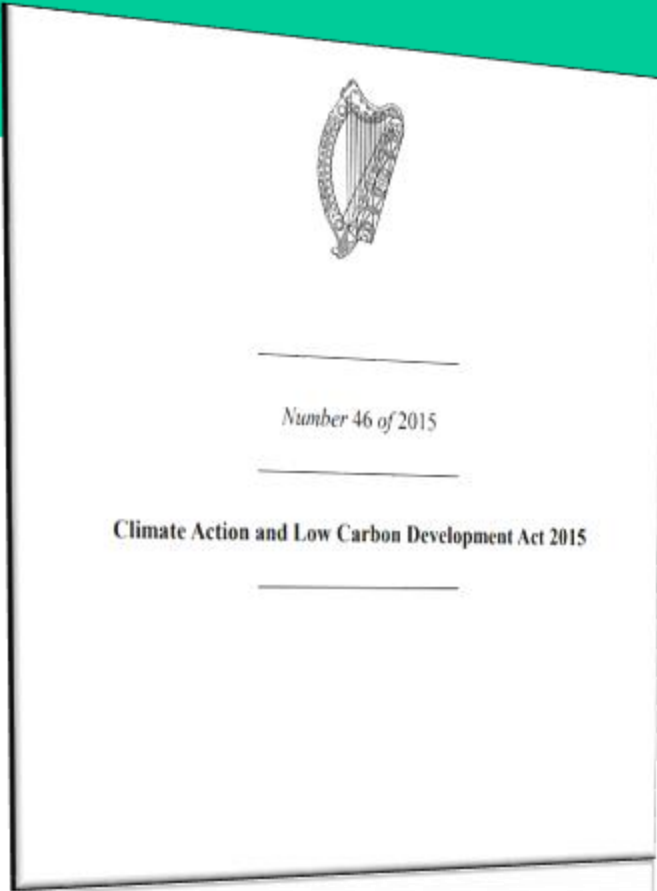
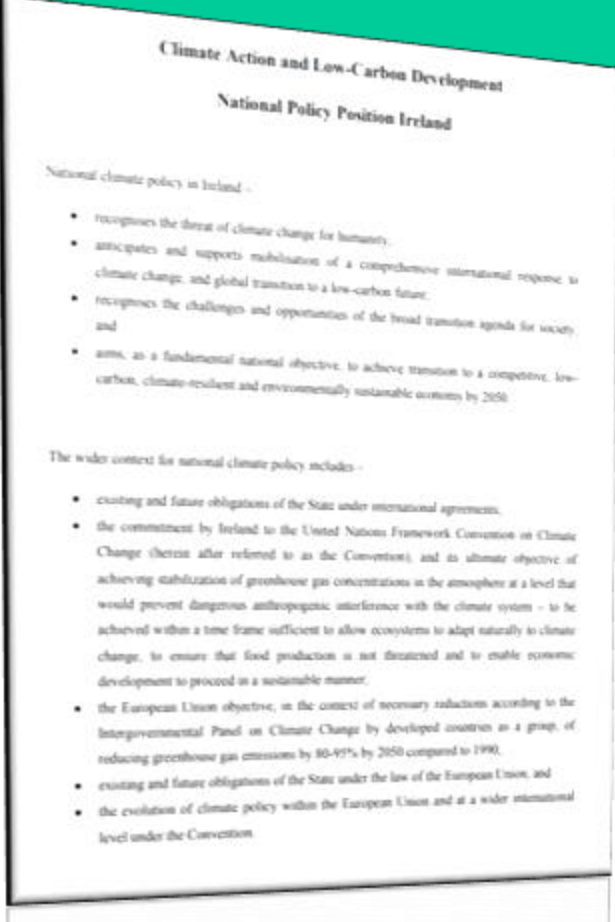


Rialtas na hÉireann
Government of Ireland

Climate Action and the Department of Health

Colin O'Hehir
November 2021

Ireland's Domestic Climate Policy



Ireland's Emissions



Ireland's CO₂eq. Emissions Inventories 1990-2020

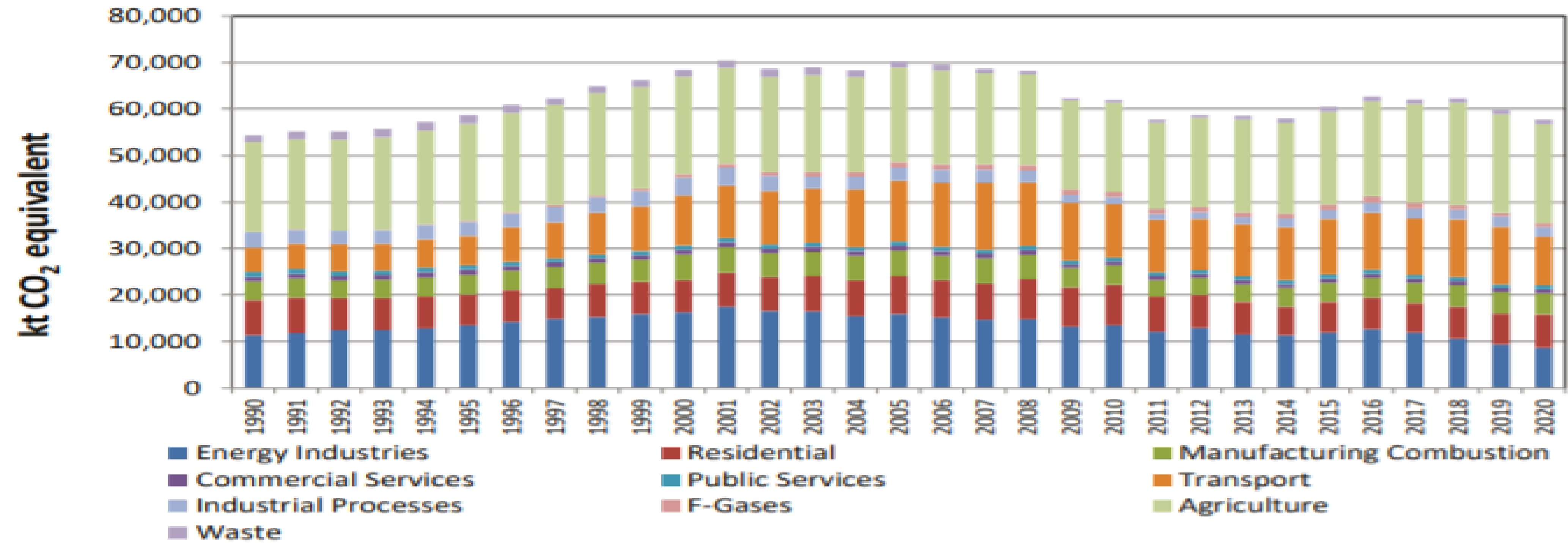


Chart data available from <https://www.epa.ie/our-services/monitoring--assessment/climate-change/ghg/key-messages/>

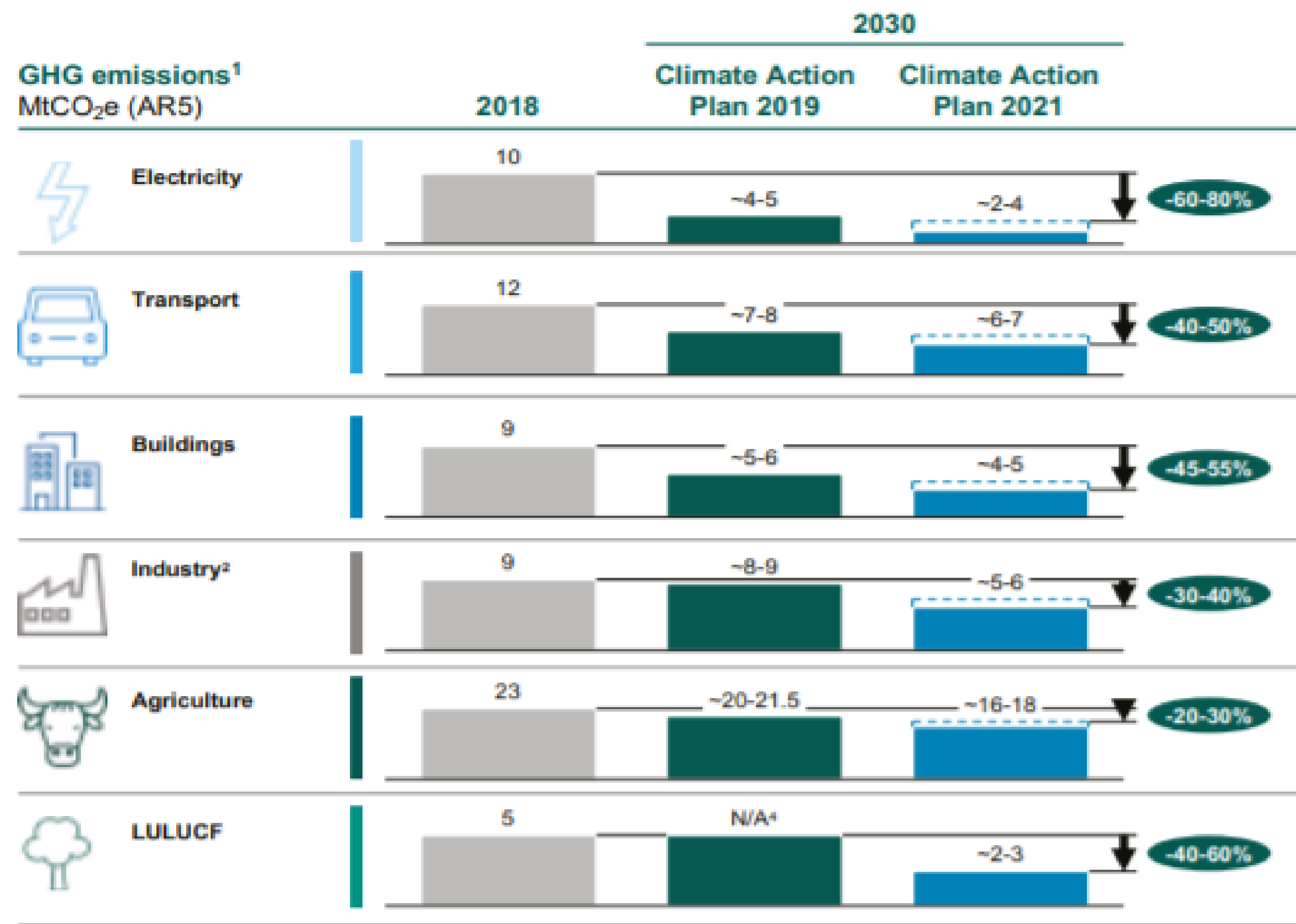
Climate Action Plan 2021



Headlines:

- ❑ 50% Emission reduction by 2030, compared with 2018
- ❑ Climate neutrality by 2050 at the latest
- ❑ Double the ambition of the 2019 Climate Action Plan
- ❑ Actions and targets for Electricity, Transport, Buildings, Industry, Agriculture, LULUCF sectors

Pathways to 2030



An additional
4MtCO₂e will be
required to achieve
Ireland's 2030 target

Driving Climate Action under the CAP



- ❑ Climate Change Advisory Council –proposes Carbon Budgets
- ❑ Climate Action Delivery Board – holds each Department accountable for delivery on actions
- ❑ Climate Action Plans & Quarterly Progress Reports
- ❑ Departments not in compliance to outline corrective measures
- ❑ Just Transition Framework & Decarbonisation Opportunities
- ❑ Public Sector Leadership Role

Public Sector Commitments



Targets

- ☐ Reduce CO2 by 51%
- ☐ Sustainable Mobility policy
- ☐ Energy Efficiency: From 33% in 2020 to 50% by 2030
- ☐ Electrify national bus fleet by 2035
- ☐ Role of Remote Working
- ☐ Triple electrification of rail network by 2030

Role of the Health Sector



**Built
Environment**

**Severe
Weather**

***Active
Living***

***Obesity /
Diet***

***UV / skin
cancer***

Air Pollution

And influencing/coordinating across other sectors when we can

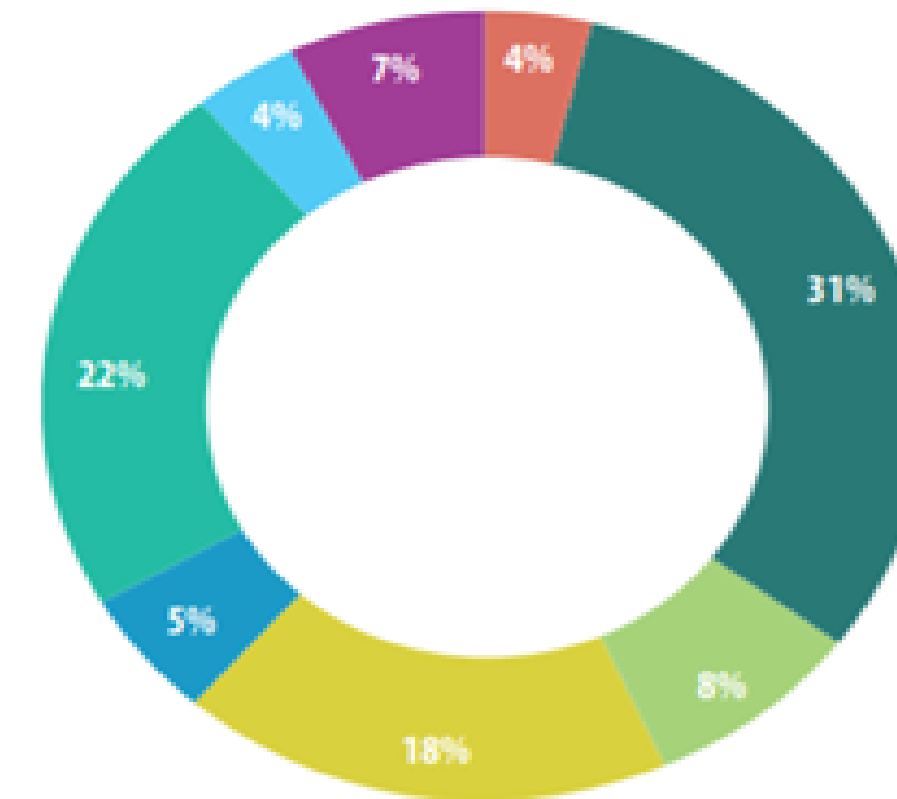
Energy Efficiency by the Public Sector

Health sector accounts for 18% of public sector energy use

Energy savings since 2009:

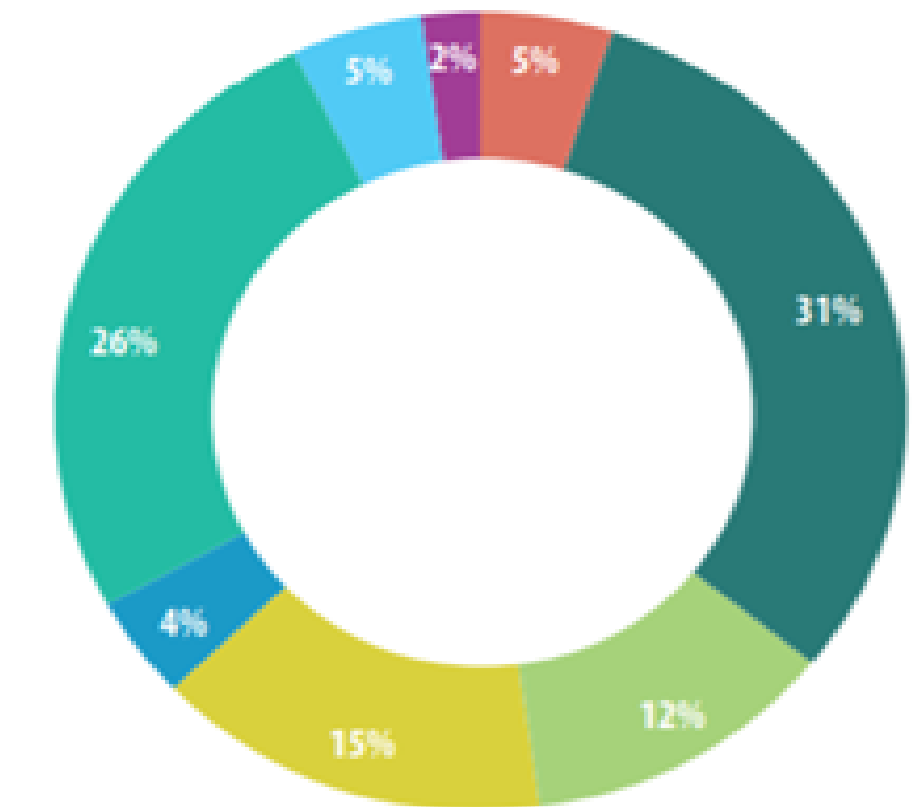
- Health sector 26%
- Dept. Health 36%

FIG. 4: BREAKDOWN OF TOTAL ENERGY CONSUMPTION BY SUB-SECTOR (GWh)



Sub-sector	2019 Energy Consumption (Primary)
	GWh
Civil Service	375
Commercial State Body	3,108
Education (excl. Schools & ETBs)	810
Health	1,754
Justice & Defence	543
Local Authorities & Water Services	2,208
Non-commercial State Body / State Agency	412
Schools & ETBs	688
Total	9,898

FIG. 12: SOURCES OF ENERGY SAVINGS



Sub-sector	2019 Energy Savings (Primary)
	GWh
Civil Service	194
Commercial State Body	1,253
Education (excl. Schools & ETBs)	478
Health	623
Justice & Defence	161
Local Authorities & Water Services	1,071
Non-commercial State Body / State Agency	186
Schools & ETBs	99
Total	4,064

Climate Change Oversight Group



- ❑ Coordinated and coherent climate action by Department of Health
- ❑ Platform for engagement with Department of Taoiseach, Climate Action Plan structures
- ❑ Engage with broader health sector incl. HSE, research, WHO etc.
- ❑ Review and scale up action

Health Sector and Adaptation Action



Sectoral Adaptation Plan 2019-24:

- ☐ Leadership, oversight of adaptation action
- ☐ Severe Weather
- ☐ UV impacts
- ☐ Air pollution
- ☐ Monitoring, research, evaluation

Climate & Health – 2021/22



- ☐ Establish Climate Change Oversight Group
- ☐ Responsibilities identified across policy areas
- ☐ Climate in bodies under Dept aegis
- ☐ Map interactions between health and climate policies
- ☐ Build on issues identified in 2019

Next Steps



- ☐ Assessment and action on commitments
- ☐ Identify health co-benefits or engagement arising from new Climate Action Plan actions
- ☐ Coherence of health sector climate agenda and action
- ☐ New actions, milestones, resourcing/data needs
- ☐ Communications around climate & health



Rialtas na hÉireann
Government of Ireland

Thank you