

# **Irish Forum for Global Health**

**Activity report  
June 2012 - June 2013**

## **ACKNOWLEDGEMENTS**

The Irish Forum for Global Health would like to thank first and foremost its members for their continued participation and support. We are also grateful to Irish Aid, to the Friends of the IFGH (Concern Worldwide, Trocaire and Dublin City University), our wonderful Student Outreach Group, our partners, and all those included in the growing global health community in Ireland and across the globe.

**This report was a collective effort with contributions from:**

Byrnnie Gilmore, David Weakliam, Leonie Corcoran, Nadine Ferris France, Nuha Ibrahim and Steve MacDonald.

**For further information and to request copies of the this publication please email:**

[info@globalhealth.ie](mailto:info@globalhealth.ie)

**For further information on the IFGH, please visit:**

[www.globalhealth.ie](http://www.globalhealth.ie)

[www.esther.ie](http://www.esther.ie)

# TABLE OF CONTENTS

<b>ACKNOWLEDGEMENTS.....</b>	<b>2</b>
<b>BROADENING CONSTITUENCIES.....</b>	<b>4</b>
<b>INTRODUCTION.....</b>	<b>5</b>
<b>LOOKING AHEAD TO 2014 .....</b>	<b>7</b>
<b>IFGH EVENTS: 2012-2013.....</b>	<b>9</b>
<b>OTHER NOTABLE ACHIEVEMENTS.....</b>	<b>12</b>
<b>HIGHLIGHTED SUCCESSES 2012-2013.....</b>	<b>13</b>
<b>Strategic partnerships.....</b>	<b>13</b>
<b>ESTHER Ireland.....</b>	<b>13</b>
<b>‘Friends of the IFGH’ Programme.....</b>	<b>14</b>
<b>IFGH Student Outreach Group.....</b>	<b>15</b>
<b>Communications.....</b>	<b>17</b>
<b>Reaching Further.....</b>	<b>18</b>
<b>IFGH INSTITUTIONAL DEVELOPMENT.....</b>	<b>22</b>
<b>Governance and oversight.....</b>	<b>22</b>
<b>Staffing.....</b>	<b>22</b>
<b>Fundraising .....</b>	<b>23</b>
<b>Monitoring &amp; Evaluation .....</b>	<b>23</b>
<b>Challenges &amp; risks.....</b>	<b>23</b>

## LIST OF ANNEXES (available on request)

- 1: IFGH Three Year Strategy 2011-2013
- 2: Annual Communications Report 2012-2013
- 3: Key Correspondent Report 2012-2013
- 4: Friends of the Forum Programme
- 5: IFGH Internship Programme
- 6: IFGH Memorandum of Association
- 7: Event evaluation reports
- 8: IFGH Fundraising strategy

## BROADENING CONSTITUENCIES



### Message from the Chair

The IFGH continued to forge new ground over the past year, responding to new developments and opportunities. The review of the White Paper on Irish Aid challenged the IFGH to reflect on the current state of global health and the role of Irish organisations and institutions. In our submission to the review, we emphasised the importance of sustaining support for major diseases, continuing to invest in health to achieve development goals, and linking health with Irish Aid priority areas of hunger and climate change.

The Government's new International Development Policy, 'One World, One Future', restates Ireland's commitment to health. I was struck by the emphasis on working with other sectors and organisations – "we have in Ireland a clear capacity in our people and in our institutions which we will harness". This ties in with our role in IFGH of bringing stakeholders together from different disciplines and organisations to address global health and development needs. I look forward to strengthening our links with Irish Aid and contributing to its policy objectives.

A notable development for the IFGH was establishing the secretariat for the ESTHER Ireland programme at the request of Irish Aid and the HSE. ESTHER Ireland will foster new health partnerships with developing country institutions, as part of the European ESTHER Alliance. The additional function is a natural fit for the IFGH, expanding its communication and network activities to a broader audience across hospitals and other health institutions. It has also enabled us to strengthen the capacity of the IFGH, through the appointment of a Communications Coordinator.

Our engagement with the universities has also broadened thanks to a blossoming Student Outreach Group. Students, graduates and academics from across Irish universities have become engaged in global health, undertaking initiatives to raise awareness and promote action. They organised the very successful National Global Health Debate between the universities, with the final chaired by Nobel Laureate Prof. Harald zur Hausen on the topic "This house believes medical aid should prioritise equity of access above outcome".

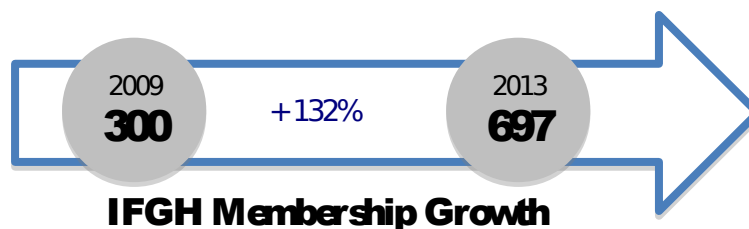
These are just some highlights and the report describes many other activities and achievements over the past year, demonstrating that the IFGH continues to play an important role in Ireland's response to the challenges in global health.

Dr. David Weakliam  
Chair



# INTRODUCTION

In the last year of its three-year strategy (see Annex 1), the Irish Forum for Global Health has maintained a steady growth, provided a reliable and consistent source of information on global health and continued to engage different stakeholders around key global health issues which demand attention. Benefiting greatly from the previous two years of building systems and firmly establishing IFGH as a credible global health network, activities and focus this year have occurred in a more mature and strategic manner. As in previous years, the IFGH has continued to develop and grow its active community of members with membership now reaching almost 700 – an increase of nearly 400 members since 2009.

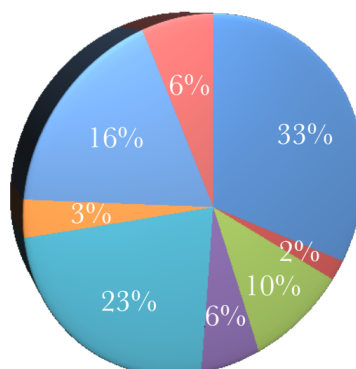


At the core of IFGH strategy is networking: facilitating individuals and organisations to come together and ensuring as many sectors as possible are engaged in the Irish response to global health challenges. In the past year, a main focus of the IFGH and much of its effort has been put into broadening the constituencies and strengthening and encouraging strategic partnerships. This has been consistent with the increased effort around fundraising and the desire to ensure that the IFGH is more sustainable.

A major development for the IFGH was to take on the secretariat function for ESTHER Ireland, at the request of Irish Aid and the HSE. The ESTHER Ireland initiative is working in synergy with the IFGH's community, bringing together the Irish health service and global health organisations in a concrete and meaningful way, with principles of good partnership and good practice at the heart of these efforts. The Student Outreach Group (SOG) has

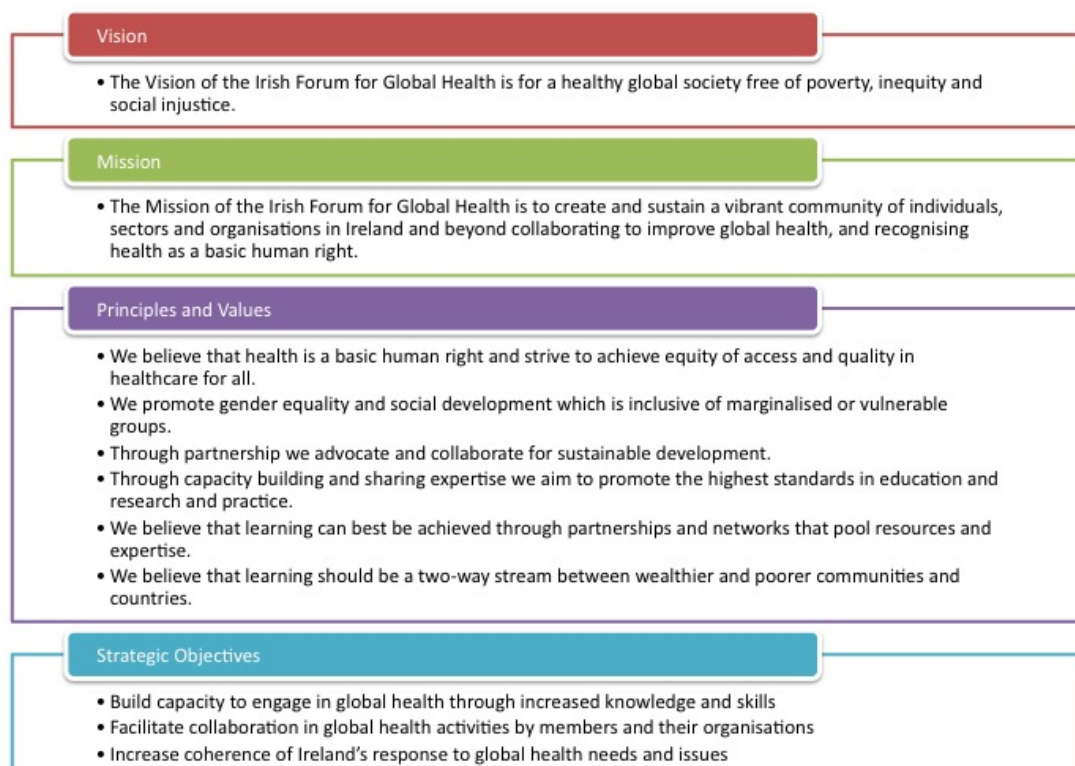
continued to go from strength to strength and has expanded its reach to over 11 institutions around the island of Ireland, ensuring students not only have a voice, but are leading the IFGH in a number of areas. Lastly, the new 'Friends of the Forum' fundraising/engagement programme has facilitated linkages to be made across the private sector in Ireland: a very new constituency for the IFGH, and a highly important source of capacity and expertise for global health efforts.

● Academic Institution ● General Public ● Other ● HSE ● NGO ● Government  
● Student ● Private



*Breakdown of current IFGH membership*

This report aims to capture a brief summary of some of the highlights and achievements of the IFGH in the past year.



*Overall Vision, Mission, Principles and Values, and Strategic Objectives of the IFGH*

## LOOKING AHEAD TO 2014

The current three-year IFGH strategy comes to an end in December 2013. Informed by well-documented activities throughout the three-year period, together with an external evaluation being carried out mid-year, a new strategic plan will be developed to guide the IFGH from 2014–2016. The challenge of ensuring a fully-funded IFGH remains and must continue to be the focus of efforts to ensure real sustainability. Limited human resources must also be taken into account in all planning, with the IFGH supported by only two part-time staff (60% and 40% respectively).

With the hosting of the ESTHER Ireland initiative, the role of the IFGH becomes even more important as a way of ensuring direct experience and expertise is shared through the growing community. The close relationship between the two will contribute greatly to the avoidance of duplication of effort, and facilitating institutions and individuals to develop strategic relationships that will lead to a better global health response.



*Health professionals  
networking at the ESTHER  
Ireland Workshop, June 2013*

Education remains at the heart of IFGH activities, focusing particularly on third-level education. The new strategy is likely to focus firmly on improving quality of, access to, and opportunities around, global health education in Ireland. It will also include a move towards better sharing of global health resources and materials such as curricula, and a move towards combined electives between engaged universities. The focus on education will be guided by a clear strategy with specific goals.

Efforts to ensure high quality and innovative communication will continue to be a cornerstone of the IFGH. This is an effective way of providing added value with the limited resources that the IFGH has.

Lastly, support for the Student Outreach Group will continue together with a firm commitment from the IFGH to support younger global health professionals. Internationally, IFGH will continue to forge strategic linkages through the ESTHER Alliance and also build on

its current linkages with organisations such as the Global Health Workforce Alliance and Tropical Health and Education Trust (THET). It will also be useful to redefine the main areas of influence for the IFGH moving forward, for instance looking to main themes such as capacity, knowledge and partnerships as a way of helping the IFGH focus and add even more value in what it does.





*Montage of photographs from notable events of the past 12 months. Clockwise from top left: Health Dialogue - World Handwashing Day; Making Time Annual Debate; Health Dialogue - Reproductive Health; World AIDS Day; iHeed Report launch; IFGH newsletter response to 'One World, One Future'; talk by Marge Berer.*

## IFGH EVENTS: 2012-2013

The 12-month period from June 2012 to June 2013 was an active period for the IFGH in terms of events. These help convene members and other stakeholders to build capacity to engage in global health by increasing knowledge and skills, as well as enabling networking and creating opportunities for collaboration. The next major IFGH conference is planned for 2014. Significant events in which the IFGH had significant involvement in the past 12 months are listed below:

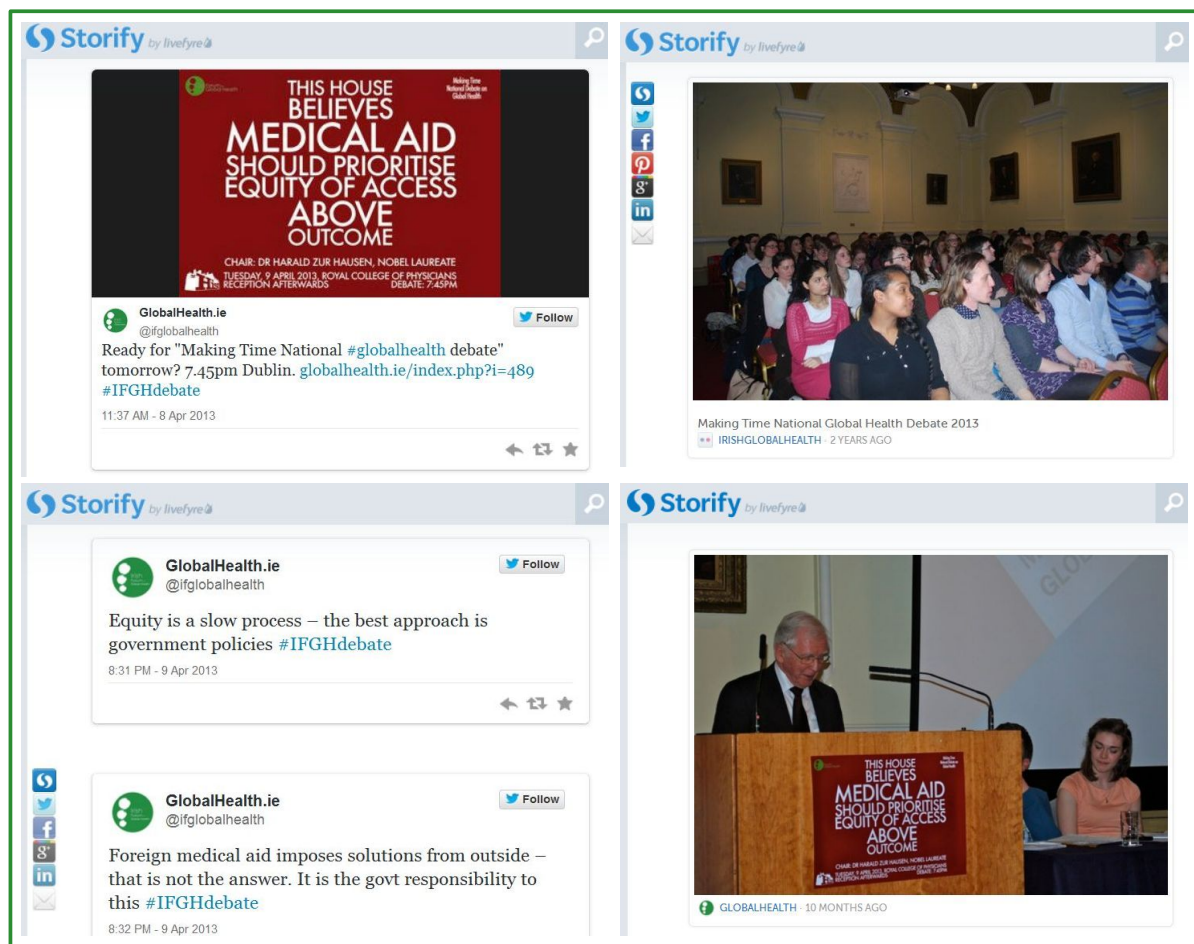
- Co-hosted the 'Migration of Sudanese Doctors: Dynamics and Opportunities Conference' with the Sudanese Medical Association UK & Ireland at NUI Galway, June 9, 2012
- Facilitated 'Sudanese Doctor Migration Meeting', a meeting that brought key stakeholders in Sudan and Ireland together to discuss opportunities for formalising a collaboration around post-graduate training of medical doctors and other forms of training/capacity building.

- Co-hosted the launch of the iheed 2012 Report 'Preparing the next generation of community health workers: the power of technology for training', June 2012.
- 'Speak Your World: Writing Social Media in Global Health', a skills-building workshop for members of the Student Outreach Group as an introduction to report writing and social media skills as part of the Key Correspondent Team.
- 'Health Dialogue – 'Back to Basics: Washing Hands = Saving Lives: Handwashing and its role in achieving Public Health and Nutrition Outcomes', October 2012. This Health Dialogue aimed at bringing key Irish and international stakeholders together to primarily inform the global health community in Ireland about the benefits of handwashing with soap in relation to public health and wider development goals. It involved private sector, universities and development practitioners.
- 'Scaling up nutrition in fragile health and community systems - a learning seminar', December 2012. Jointly organised by IFGH, Concern Worldwide and Development Studies Association of Ireland (DSAI), this seminar focused on evidence-informed and 'promising' strategies for community and health system strengthening, particularly in disaster-prone contexts, where emergencies may regularly overwhelm local capacity.
- Annual Irish Aid Father Michael Kelly World AIDS Day Lecture, December 2012. This event was hosted by Irish Aid in collaboration with the Irish Forum for Global Health and University of Limerick to commemorate World AIDS Day 2012. The theme of the lecture was 'Education, sports and music – social vaccines against AIDS' and featured short presentations from a number of speakers offering different perspectives and experiences.
- Health Dialogue – 'Universal Access to Reproductive Health', Queens University Belfast, March 2013. The IFGH Student Outreach Group and Medsin QUB organised a health dialogue event on the topic of reproductive health on March 6th, 2013 in Belfast, to mark International Women's Day. A range of international and national speakers took part in the event which actively reached and engaged constituents in the North of Ireland.
- Making Time National Global Health Debate Competition, April 2013. Organised by the Student Outreach Group, the objective of this annual event is to facilitate student engagement in global health issues as well as raising awareness. Leinster Heats were held for the first time, as a pilot for national heats next year, and culminated in a final chaired by Nobel Prize Laureate Professor Harald zur Hausen, which brought together teams from universities in Limerick, Galway, Belfast and Dublin who debated the motion 'Medical aid should prioritise equity of access over outcomes'.

- ‘Implications of Catholic Health Policy for Emergency Obstetric and other Reproductive Health Care’, May 2013, Informal meeting with Marge Berer, Editor, Reproductive Health Matters.
- ‘Developing High Quality Partnerships to Improve Health Care in Developing Countries’, ESTHER Ireland Launch and Workshop, June 2013.

Each event was additionally followed up by an report published online, an evaluation and also presentations, podcasts and photographs made available via the IFGH website (and the ESTHER Ireland website for the ESTHER Ireland launch and workshop, [www.esther.ie](http://www.esther.ie)). Each event was actively tweeted and shared extensively across our social media: @ifglobalhealth on Twitter and Facebook, all available through [www.globalhealth.ie](http://www.globalhealth.ie).

New forms of communication were also utilised, such as ‘Storify’ – a program that allows a user to compile a story by curating the social media coverage of an event, including videos, photographs, tweets and more.



*Screenshots from the IFGH Storify of the Making Time National Global Health Debate. The full Storify can be read online at: [www.storify.com/leocorc/](http://www.storify.com/leocorc/)*

## OTHER NOTABLE ACHIEVEMENTS

**First IFGH Membership Directory produced in February 2013:** This provides contact details and volunteered information about members which is shared within the Forum to aid members convening.

**‘Global Health Matters’ bi-monthly newsletter:** With a focused editorial, this newsletter highlights important national and international global health news, publications and upcoming events. The most recent newsletter editorial was about Ireland’s recent policy on overseas aid and development.

**Key Correspondent Articles:** Over 13 Key Correspondent articles were written and published during this period, ensuring that all IFGH and other global health events were documented and widely shared with those who could not attend. Articles were published on the IFGH website, through IFGH social media and eForum and also through the global KC platform, [www.keycorrespondents.org](http://www.keycorrespondents.org) (see Annex 3).

## HIGHLIGHTED SUCCESSES 2012-2013

### STRATEGIC PARTNERSHIPS



*Minister Joe Costello with  
ESTHER Ireland Secretariat  
Nadine Ferris France, Leonie  
Corcoran and ESTHER Ireland  
chair David Weakliam*

### ESTHER Ireland

The ESTHER Ireland initiative was formally launched by the Minister of State for Trade and Development, Joe Costello, TD in June 2013. ESTHER Ireland facilitates partnerships between Irish hospitals and health-related institutions with institutions in the developing world. It was established in 2012 and is an initiative under a memorandum of understanding between the Health Service Executive and Irish Aid. At the end of 2012, it was decided that IFGH would host the secretariat for the ESTHER Ireland initiative and be governed by a Steering Committee.

ESTHER Ireland is part of the broader European ESTHER Alliance, a network of countries working in partnership to tackle major diseases and improve healthcare for women and children. Central to the ESTHER Alliance is strengthening healthcare services by building expertise and sharing experience through high-quality partnerships. ESTHER partnership projects are based on best development practice and can act as an example of responsible and beneficial partnerships between partner countries.

#### **ESTHER IRELAND PARTNERSHIPS: RCSI – COSECSA COLLABORATION**

An international partnership is building regional capacity to improve surgery in east, central and southern Africa. Through the partnership, 146 surgeons have been trained as surgical trainers, and 27 as basic science trainers.

For more, visit: [www.esther.ie](http://www.esther.ie)

Ireland will focus on partnerships in Africa and draw upon the extensive first-hand experience that many health workers in Ireland have gained from previous work throughout the continent. This new initiative will add to the extensive health and HIV and AIDS work that is presently supported by Irish Aid.



It is envisioned that hospital partnerships will comprise the majority of future partnerships supporting a range of potential areas. Concurrently, it is anticipated that there will also be twinning/ partnerships involving higher education institutions, health service departments and units, and NGOs.

The ESTHER Alliance was initiated in 2001 by the French Minister of Health and members include: France, Italy, Luxembourg, Spain, Austria, Belgium, Germany, Portugal, Greece, Norway, Switzerland and, now, Ireland.

ESTHER Ireland currently has two partnerships: the Cork University Hospital's partnership with the Omdurman Maternity Hospital in Sudan and the collaboration between the Royal College of Surgeons Ireland with the College of Surgeons of East, Central and Southern Africa (COSECSA). More information is available at: [www.esther.ie](http://www.esther.ie)

### **‘Friends of the IFGH’ Programme**



*The Friends of the IFGH programme allows organisations to build links with the IFGH*

The new 'Friends of the IFGH' programme (see Annex 4) was introduced in 2012 as a joint engagement and fundraising strategy for IFGH. The programme provides an opportunity for organisations to get involved with, and support the IFGH, becoming recognised as 'Friends of the Irish Forum for Global Health' at a monetary level appropriate to those organisations. To date, Concern, Trocaire and Dublin City University (DCU) have joined the programme and we are currently in discussions with a number of universities and private sector companies.

Private sector organisations who have demonstrated commitment to corporate social responsibility and organisations who share the vision and can support the mission and principles of IFGH are being targeted. Therefore, as well as a fundraising strategy, the programme also helps ensure organisational and institutional commitment to the goals of the IFGH over time.

## IFGH Student Outreach Group



*A Student Outreach Group structure document; a meeting of members of the group and IFGH Executive Committee.*

The Student Outreach Group of the IFGH is a grassroots initiative, started by student members of the Forum in 2011, and is characterised by the energy and commitment often related to such initiatives. Driven by recognition of the importance of the IFGH as a valuable platform for all students studying or involved in research related to global health and development, and by a wish for the IFGH to further engage students, a core group was formed. Ultimately, the aim of the SOG is to bring together a wider group of students and researchers interested in global health issues, and represent them to stakeholder and policy makers from Ireland and around the world, at events such as the IFGH International Conference. The group is composed of current students and recent graduates of courses related to global health and development, and in the past 12 months it has grown to include 19 representatives from 10 institutions across the island of Ireland.

This group allows the students to contribute new and innovative ideas to the IFGH and helps ensure that it is meeting student needs, while providing student members exciting opportunities and connections in the field of global health. The Chairperson of the group, who is elected for a renewable two-year period, sits on the IFGH Executive Committee, further ensuring the needs, ideas and voices of students are better heard in discussions and decisions of the IFGH in a sustainable manner.

In the past 12 months, the SOG was the driving force behind a number of key IFGH events, such as Health Dialogues on campuses in the Republic and in Northern Ireland; the World AIDS Day event; and the IFGH Annual Development Debate. The group was also involved in organising a number of training events for students, such as writing workshops.

The group also undertook a strategic review of its structure ahead of the next academic year.

The contributions of the SOG, through events and communication, directly impacts the work of the IFGH, amplifying our messages and extending our reach through activities in third-level institutions and beyond.

The SOG is currently developing their calendar of events for the next academic year, focusing on a number of key world health and advocacy days, such as World Toilet Day, finding links between these and the new Irish strategy on aid and overseas development.

#### **ENGAGEMENT OF THIRD-LEVEL STUDENTS IN THE IFGH**

In 2012 and 2013, the Student Outreach Group continued to strengthen and grow in numbers and reach. The group now consists of 19 representatives from 10 third-level institutions across the island of Ireland. Comprising current and recently-graduated students from universities all over Ireland, the SOG has come together to try to better engage Ireland's growing student population interested in global health.

#### **Members represent:**

Dublin City University  
 Kimmage Development Studies Centre  
 NUI Maynooth  
 Queen's University Belfast  
 Royal College of Surgeons  
 Trinity College Dublin  
 University College Cork  
 University College Dublin  
 University of Limerick  
 University of Ulster



## COMMUNICATIONS



*The IFGH's integrated communications strategy combines different media and platforms to deliver coherent packages of messaging.*

The mission of the IFGH is to 'create and sustain a vibrant community of individuals, sectors and organisations in Ireland and beyond, collaborating to improve global health, and recognising health as a basic human right'. Critical to both creating and sustaining this community is communication between members and other stakeholders, and this now constitutes an important focus of IFGH activities.

A major change in the past 12 months was the hiring of a Communications Coordinator in March 2013 (see Staffing) to support quality communication for both the IFGH and ESTHER Ireland. Since the last report, the communication activities have shown positive results through the increasing membership of the IFGH (via the sign-up form for the regular eForum mailing) and the increasing reach of communication outputs generated by the IFGH. Currently the IFGH uses two types of communication to inform and engage in dialogue with members and interested stakeholders: face-to-face communication (events and meetings) and online communications. The strategy for the latter consists of a number of platforms and tools: the **website** ([www.globalhealth.ie](http://www.globalhealth.ie)); the **eForum** (a listserve-style service through which we send regular emails to members on global health news and events); the **eNewsletter** (sent bi-monthly); and **social media** channels (Facebook, Twitter, LinkedIn and Flickr).

Using an integrated strategic communications framework enables the IFGH to combine disparate messaging efforts to develop a coherent approach to communication. This allows for the creation and distribution of communications that differ in style, purpose and distribution channel, but are linked by a common coherence. This style of communication aligns clearly with the notion of the Forum itself, which comprises diverse individuals connected by a common goals, and allows the IFGH to guide and utilise communication from the Student Outreach Group. Maintaining consistency and coherence can foster an 'echo effect' that increases the visibility of the IFGH across platforms and reinforces its messages. It also prevents contradictory or confusing messages being sent to different groups across separate communication platforms.

## REACHING FURTHER

During this 12-month period, there has been a sustained increase in the number of visitors to [www.globalhealth.ie](http://www.globalhealth.ie). The number of visits to the page has increased by 28.03% (from 10,985 to 14,064) and the number of individuals visiting the website has increased by 39.84% (7,738 to 10,821). These figures are important to indicate the level of engagement by members of the community with the most widely accessible public face of the IFGH.

We have continued to monitor how people engage with our communication outputs and have responded to changing needs. For example, there has been a large increase in the number of people viewing the website via mobile devices, in line with current technology trends. We are therefore responding by designing a 'responsive website', which will make navigating the site via mobile devices much easier. This will continue to act as a global health information portal, providing up-to-date news and events on global health issues as well as offering a place for members to share research and projects. These functions will be improved on the new platform and other advantages are highlighted in the Communications Report (see Annex 2).

### THE IFGH WEBSITE AND SOCIAL MEDIA IN 2012-13

**Website:** Continued increase in visits to [www.globalhealth.ie](http://www.globalhealth.ie)

Total visits for the 12-month period from June 2012 was 14,064, an increase of over 28% compared to the previous period.

**Facebook:** Increased engagement with followers

This is indicated by a large increase in 'likes' of our page, at 216 compared to 96 one year ago.

**Twitter:** Continued rapid growth

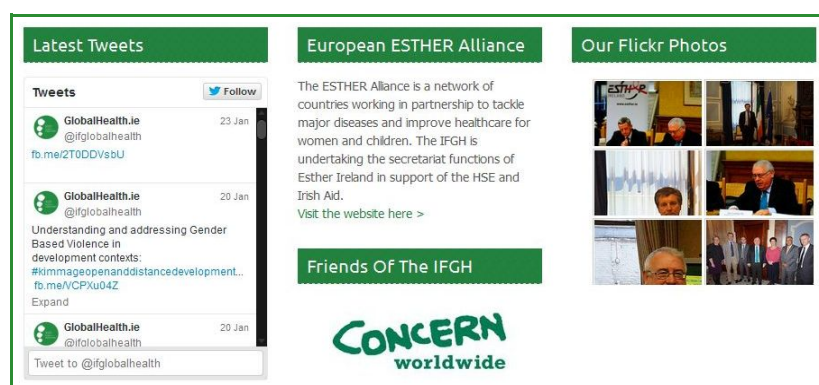
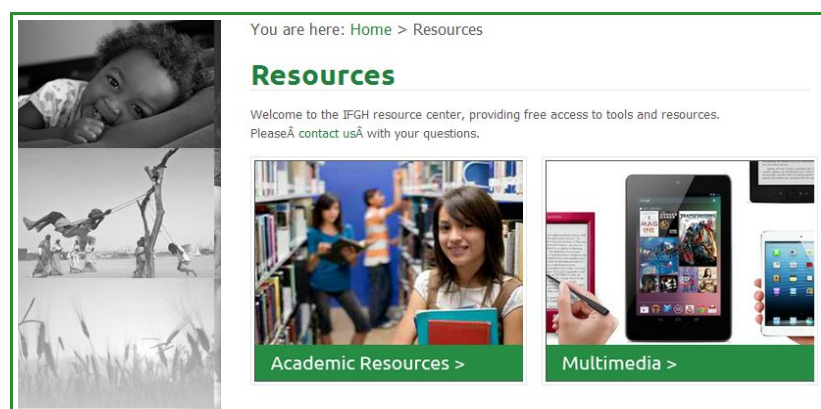
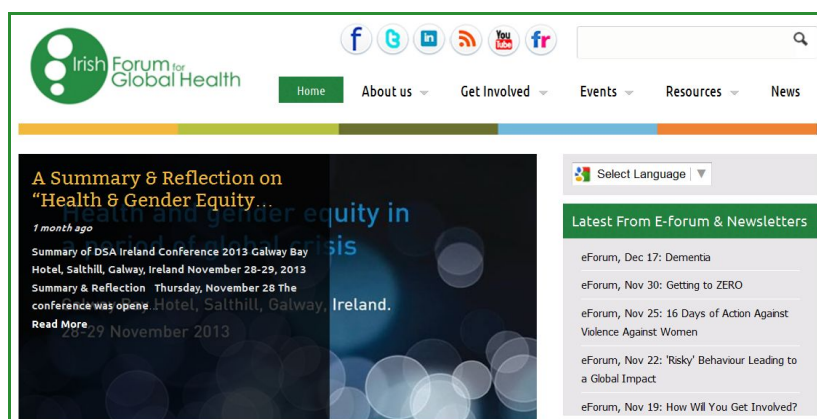
Currently the IFGH has 525 followers, compared to 333 one year ago. To-date, 1,142 tweets have been produced by the IFGH (compared to 338 one year ago).

**LinkedIn:** Sustained growth

Members of the group have almost doubled in the past year, from 38 to 65. IFGH recognises the platform as a useful tool for discussion groups and hopes to utilise this reach going forward.

**Flickr:** Rapid growth in views.

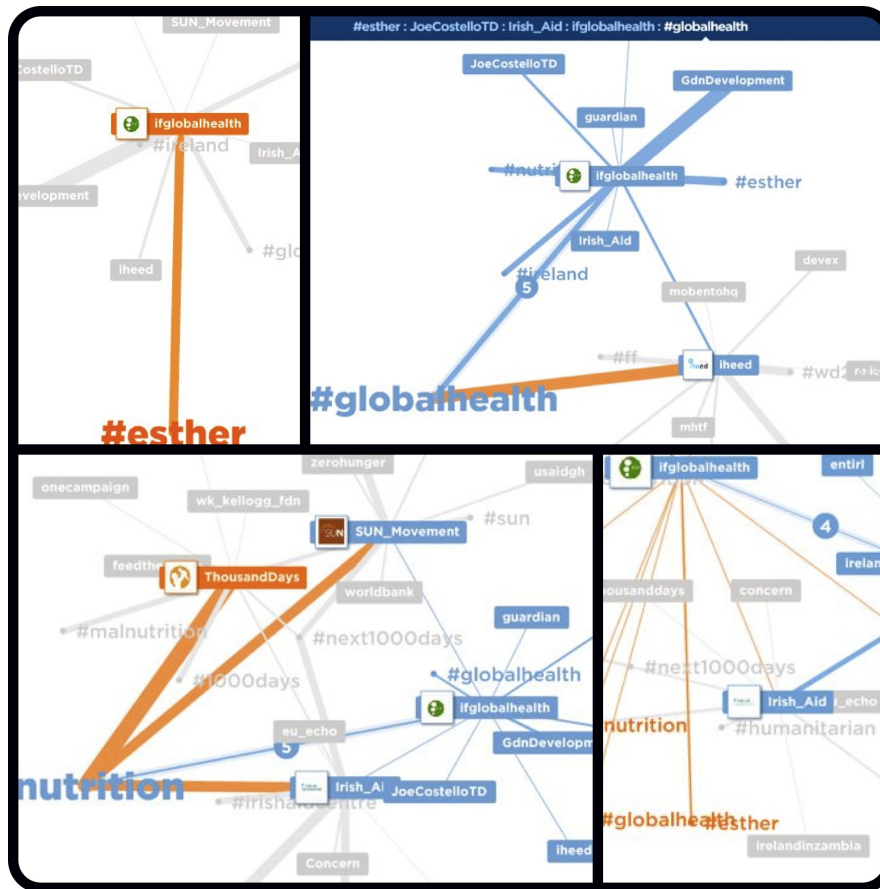
The total number of views is over 11,000, compared to 4,412 total picture views one year ago. This reflects an increase in use of this platform by IFGH following events.



Screenshots of the new [www.globalhealth.ie](http://www.globalhealth.ie) web design, including integrated twitter feed and homepage links to all social media channels, links to ESTHER Ireland and Friends of the IFGH, and revamped pages, such as resources.

During this period, the IFGH regularly monitored its online performance, documenting this in Communication Reports, using tools such as Google Analytics. This analysis has begun to indicate that an integrated communications strategy is having an effect on the activities of viewers online. We used new tools to monitor our reach across social media platforms, such as [www.MentionMapp.com](http://www.MentionMapp.com) which can be used to see the reach of a twitter account to other accounts and subject matters. As can be seen below, @ifglobalhealth is involved in conversations with Irish Aid, the Guardian Development Platform iHeed, the Sun

Movement, Joe Costello TD, etc. We are also involved in discussions that are hashtagged, such as #malnutrition, #ESTHER, #nutrition.



*Screenshots of MentionMapp, showing linkages between the IFGH twitter account, and other significant twitter users, as well as hashtags of topics of importance.*

We utilised all platforms to amplify advocacy messages around issues such as world health days. The diagram below gives examples of how messages around World TB Day were sourced and disseminated through the website, via Twitter, Facebook and the eForum.



### Flow of IFGH integrated communications around specific events

Using these channels in a complementary fashion has allowed the IFGH to increase the number of people who view the Forum on one site, such as Facebook, and who then visit another IFGH information source such as the website itself. In this period, referrals to the website from Twitter have increased by 900%; and while referrals from Facebook dipped 2%, when combined with referrals from the Facebook Mobile page (+78%), it was the third highest source of traffic after Google searches and direct traffic to the page.

Google searches became the highest source of traffic (+58% on last period) indicating an increased awareness of the IFGH by web users. Both these searches and direct traffic represent the majority of traffic to the website.

Another additional area that received attention in the past quarter is the potential to amplify our communications through the Student Outreach Group. In order to encourage coherent messaging from members of the group, the IFGH Communications Coordinator is working with the SOG to ensure complimentary messaging and use of IFGH social media sites ahead of big events, such as World Toilet Day 2013.



## IFGH INSTITUTIONAL DEVELOPMENT

### GOVERNANCE AND OVERSIGHT

IFGH was registered at the end of 2010 as a Company Limited by guarantee “The Irish Forum for Global Health Limited” with three Directors and eight Members. The IFGH functions through an Executive Committee comprising nine members who meet regularly and take collective decisions. The Committee nominate a Chair for a period of three years. Current Committee members include individuals from the Centre for Global Health, Trinity College; Royal College of Surgeons in Ireland; National University of Ireland, Maynooth; National University of Ireland Galway; University College Cork; the Health Service Executive (HSE) and Irish Aid.



*Some of the members  
of the IFGH Executive  
Committee.*

In 2013, the Executive Committee added monthly teleconferences to their previous schedule of quarterly face-to-face meetings. Given the structure of the IFGH, that is both governed and executed by the Executive Committee, it was felt that more regular meetings would facilitate better engagement by all committee members. That strategy is proving successful, particularly as the IFGH continues to develop rapidly. Following the external evaluation carried out during mid-2013, the structure of the IFGH, in particular its governance, will be reviewed. The annual general meeting was held in November 2012 fulfilling a legal requirement of the IFGH. The process of applying for charity status is underway.

### STAFFING

In March 2013, IFGH recruited a Communications Coordinator working two days per week. This provides some additional support for IFGH communications and also enables the Operations Director to dedicate time to the ESTHER Alliance, now incorporated into the functions of IFGH secretariat. Moving forward into 2013 and beyond, both IFGH and ESTHER

Ireland will be managed with the Operations Director working three days a week and the Communications Coordinator working two days a week

The IFGH engages a Professional Intern 2-3 days a week and in May 2013 developed a new Internship Programme (see Annex 5) outlining the principles, benefits and including an incentive scheme to ensure that the Intern is valued and supported during their time with IFGH. Given the support required for the ESTHER Alliance and level of activity by IFGH, the lack of administration support is being felt even more than before.

## **FUNDRAISING**

Fundraising has been a priority for IFGH for this past year. This has involved development of a living fundraising strategy, attendance at a number of strategic meetings and events as well as the development of the 'Friends of the Forum programme' described above under partnerships. As will be case across the board, it is clearly not an easy time for fundraising, with many organisation, foundations and companies cutting back on spending and trying to find ways to economise. It is also particularly challenging to raise money for a network, whose main job it is to facilitate partnerships, create opportunities and provide information.

## **MONITORING & EVALUATION**

The IFGH has moved to establish more formal M&E processes. In addition to the 24-Month Workplan and 3-Year Strategy, the IFGH also monitors and evaluates its communications strategy on a monthly basis with the production of a web analytics report. Evaluation forms are also produced for IFGH events and given to attendees. Following events, evaluation reports are developed to identify areas of strengths and weaknesses. This helps ensure that the events we are providing are genuine learning and networking opportunities for our members. An external evaluation of the IFGH will be completed in November 2013.

## **CHALLENGES & RISKS**

As the IFGH expands, it continues to face a set of challenges and risks. These include:

- Securing full funding to enable the IFGH to realise its vision and goals.
- Increased demands on staff incurred by commitment to ESTHER Ireland.
- Ensuring a strategic focus where IFGH can show real impact over the next 3 years.
- Increased demands on the Executive Committee model of governance and oversight as operations continue to grow.

We fully anticipate that the IFGH will continue to grow as an organisation, overcoming these challenges through strong leadership, excellence among staff, collaboration with IFGH members, organisational partners, and the wider Global Health community.



[www.globalhealth.ie](http://www.globalhealth.ie)